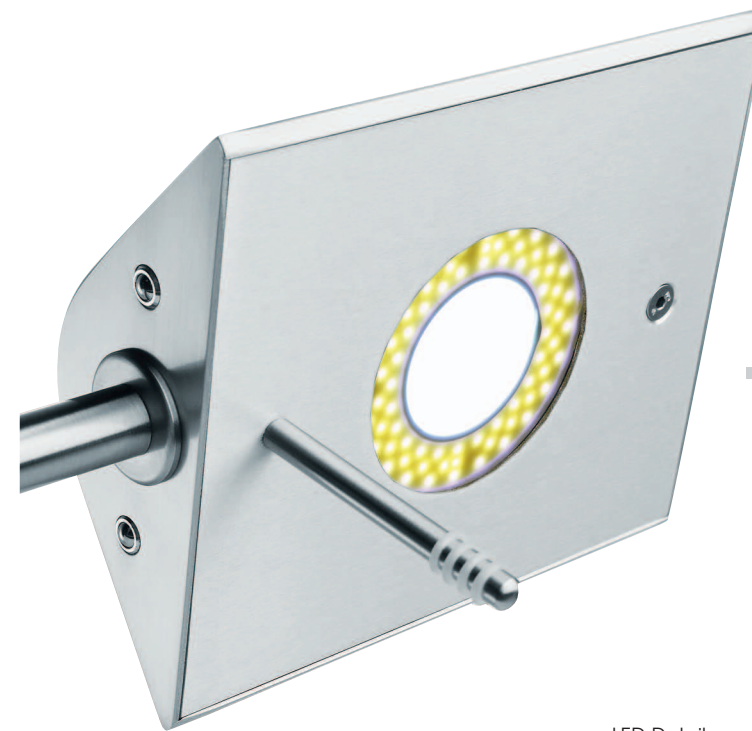


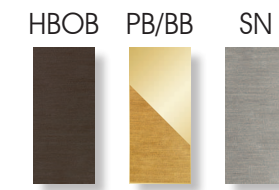


9602\*LED  
COLOR-BLEND LED

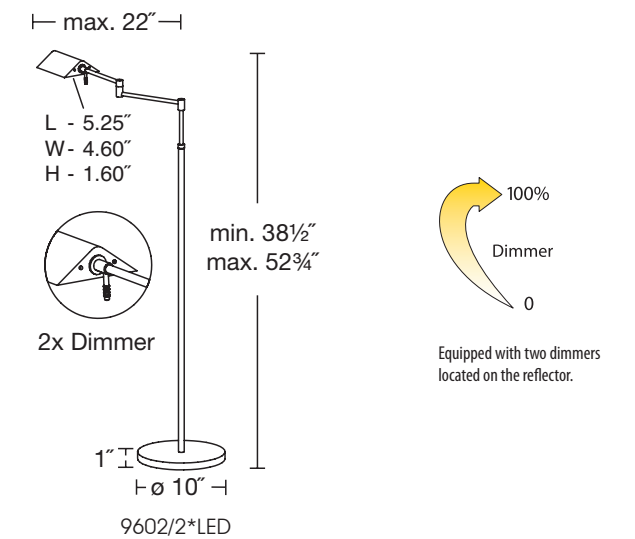


LED Detail  
LED Configuration / Dimmer Locations

FINISH OPTIONS

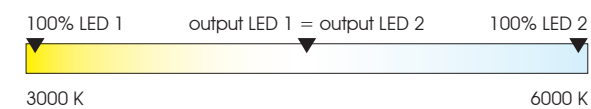


DIMENSIONS



DIMMER FEATURES

Independent Dimming For Each LED Type  
LED Color Temperature Ratios:



LED SPECIFICATIONS

- Light Engine:** Holtkötter PC Board LED 13-2 with Two-Tone LED Technology
- Optic / Reflector:** Holtkötter Aluminum Reflector with precise Color Blend Optics
- Light Output:** 525 / 595 Lumens (Σ 1120) equivalent to 80 W Halogen
- Light Color:** 3000 / 6000 Kelvin / CRI 80+
- Control / LED Driver / Dimmer:** Holtkötter Dimm-System LED with dual full-range dimming of < 1% - 100%
- Maximum Current / Voltage:** 1000mA & 14V
- System Power Consumption:** 2...14 Watts